

St. Georges Road

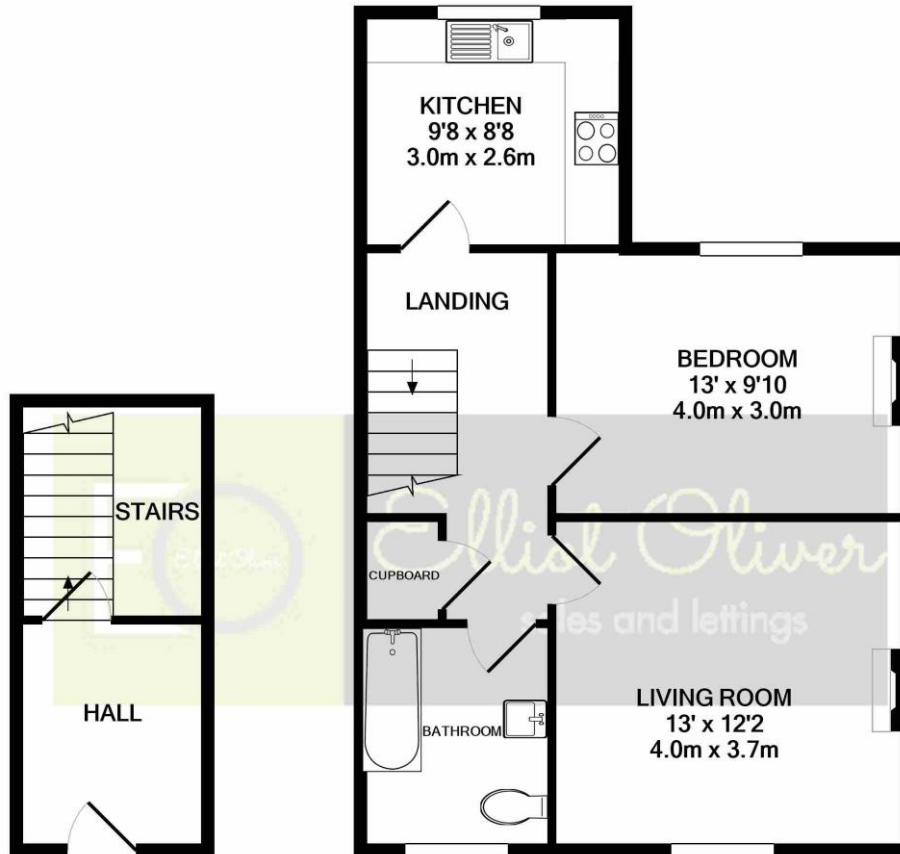
Cheltenham GL50 3EG



Georges Road, Cheltenham GL50 3EG

This is a very well presented top floor apartment situated under a quarter of a mile from Waitrose, the Town Centre and train station. The apartment would be a great first time home or could be rented out for approx. £650 per calendar month. The accommodation on offer includes a double bedroom, living room (these two could be switched around to suit the buyer), separate kitchen with a range of cupboards/utility spaces, and lastly a smart bathroom which has a shower over bath. The property further benefits from no service charges, local permit parking, electric heating and is chain free.





GROUND FLOOR
APPROX. FLOOR
AREA 115 SQ.FT.
(10.7 SQ.M.)

1ST FLOOR
APPROX. FLOOR
AREA 522 SQ.FT.
(48.5 SQ.M.)

TOTAL APPROX. FLOOR AREA 637 SQ.FT. (59.2 SQ.M.)

Whilst every attempt has been made to ensure the accuracy of the floor plan contained here, measurements of doors, windows, rooms and any other items are approximate and no responsibility is taken for any error, omission, or mis-statement. This plan is for illustrative purposes only and should be used as such by any prospective purchaser. The services, systems and appliances shown have not been tested and no guarantee as to their operability or efficiency can be given
Made with Metropix ©2021

Agents Note: Whilst every care has been taken to prepare these sales particulars, they are for guidance purposes only. All measurements are approximate and for general guidance purposes only and whilst every care has been taken to ensure their accuracy, they should not be relied upon and potential buyers are advised to recheck the measurements



OFFICE

101 Promenade,
Cheltenham,
Gloucestershire, GL50
1NW
info@elliottoliver.co.uk